

Active Recombinant Human IgG1 Fc Chimera Protein (Pro100-Lys330, Leu117Ala, Leu118Glu, Gly120Ala, Thr276Ala), Alexa Fluor 488 Labeled

Cat. No. IgG1 Fc-09H Lot. No. (See product label)

SPECIFICATION

Product Overview	<p>Recombinant Human IgG1 (Pro100-Lys330, Leu117Ala, Leu118Glu, Gly120Ala, Thr276Ala) without tag was expressed in Mouse myeloma cell line.</p> <p>Labeled with Alexa Fluor 488 via amines</p> <p>Excitation Wavelength: 488 nm</p> <p>Emission Wavelength: 515-545 nm</p>
Species	Human
Source	NS0
Description	IgG, a monomer, is the predominant Ig class present in human serum.
Form	Dimer
Bio-activity	Measured by flow cytometry for its ability to bind anti-human IgG1 Fc Antibody conjugated beads. The concentration of Recombinant Human IgG1Fc Chimera Alexa Fluor 647 that produces 50 % of the binding response is 10.0-100 ng/mL.
Molecular Mass	<p>Predicted Molecular Mass: 26.6 kDa</p> <p>SDS-PAGE: 30-40 kDa, under reducing conditions.</p>
N-terminal Sequence Analysis	Ile

 Tel: 1-631-559-9269 1-516-512-3133

 Email: info@creative-biomart.com  Fax: 1-631-938-8127

 45-1 Ramsey Road, Shirley, NY 11967, USA

Endotoxin	< 1.0 EU/μg of the protein by the LAL method.
Purity	> 95 % by SDS-PAGE visualized with Silver Staining and quantitative densitometry by Coomassie Blue Staining.
Storage	Protect from light. Use a manual defrost freezer and avoid repeated freeze-thaw cycles. 6 months from date of receipt, -20 to -70 centigrade as supplied. 1 month, 2 to 8 centigrade under sterile conditions after opening. 3 months, -20 to -70 centigrade under sterile conditions after opening.
Storage Buffer	Formulation Supplied as a 0.2 μm filtered solution in PBS with BSA as a carrier protein.
Shipping	The product is shipped with dry ice or equivalent.
Conjugation	Alexa Fluor 488

GENE INFORMATION

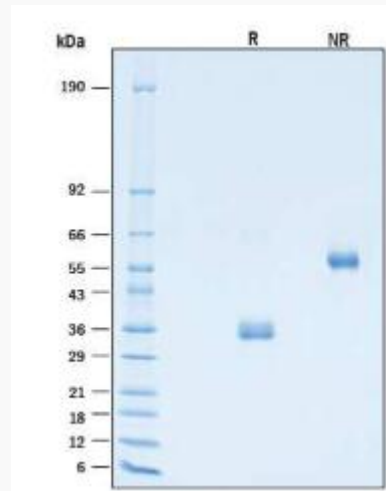
Official Symbol	IgG1
Synonyms	Immunoglobulin G1; IgG1; Igh-4; RGD1359539; VH7183
UniProt ID	P01857
FC	

 Tel: 1-631-559-9269 1-516-512-3133

 Email: info@creative-biomart.com  Fax: 1-631-938-8127

 45-1 Ramsey Road, Shirley, NY 11967, USA

SDS-PAGE



 Tel: 1-631-559-9269 1-516-512-3133

 Email: info@creative-biomart.com  Fax: 1-631-938-8127

 45-1 Ramsey Road, Shirley, NY 11967, USA